

TROPICAL VACATION HOMES

BEACH HOMES IN ANTIGUA

CHILD-HEADED HOUSEHOLDS

GC-YAG AFRICA

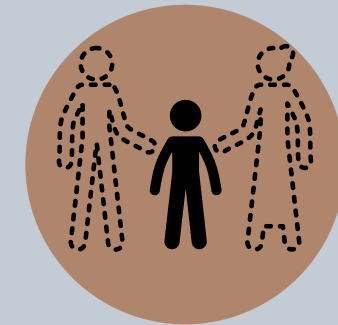


Introduction

What is it?

Households in which all of the members are below 18 years of age

Key causes:



Orphanhood



Poverty

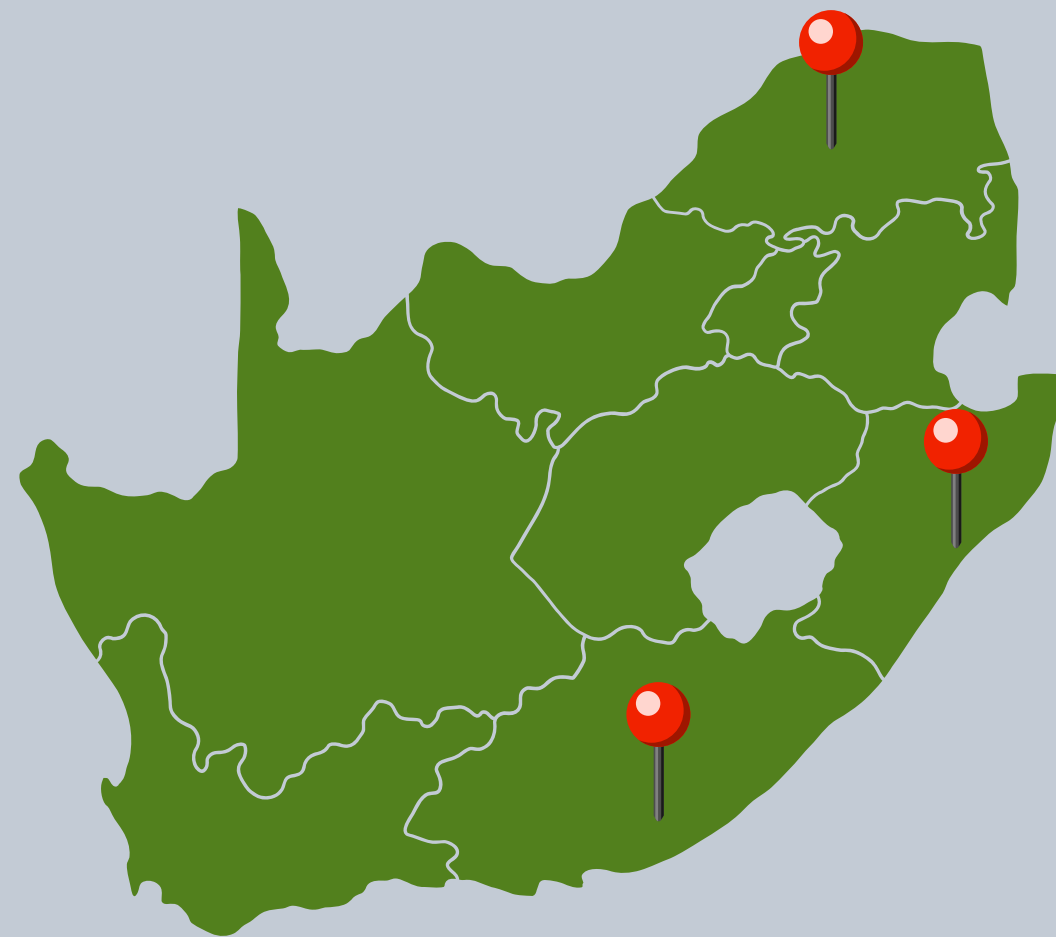


Conflict



Migration

Where it is an issue?



Causes and Challenges



Death of parents due to disease



Poverty and economic hardship



Abandonment or migration by parents



Wars, conflicts & natural disasters



Lack of family support



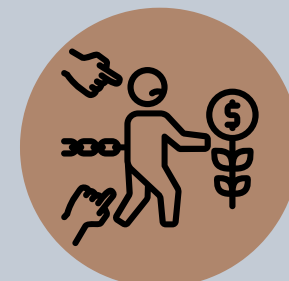
Limited access to education



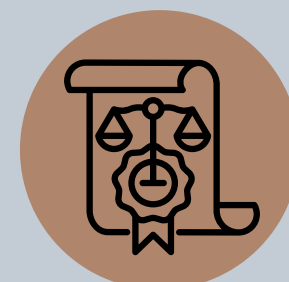
Psychosocial burden



Economic insecurity



Vulnerability to exploitation



Lack of legal recognition

Solutions and Interventions

Ideals

vs

Realities

Government support

Sensitization of communities in collaboration with
civil groups

NGOs and community support programs

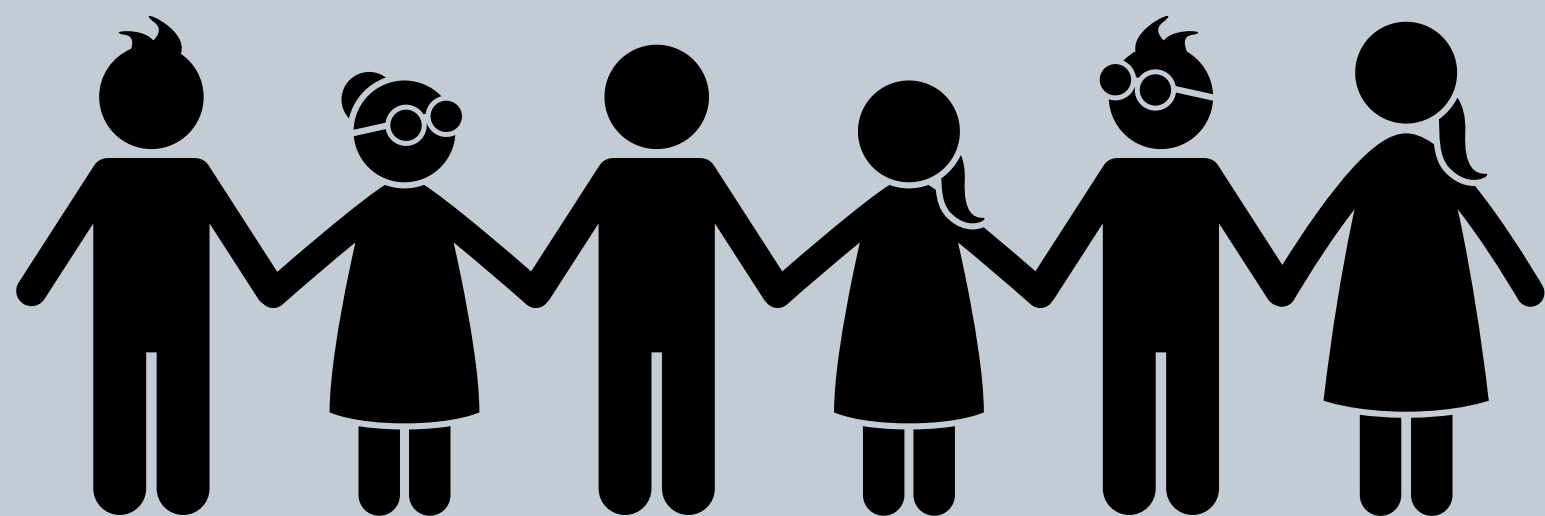
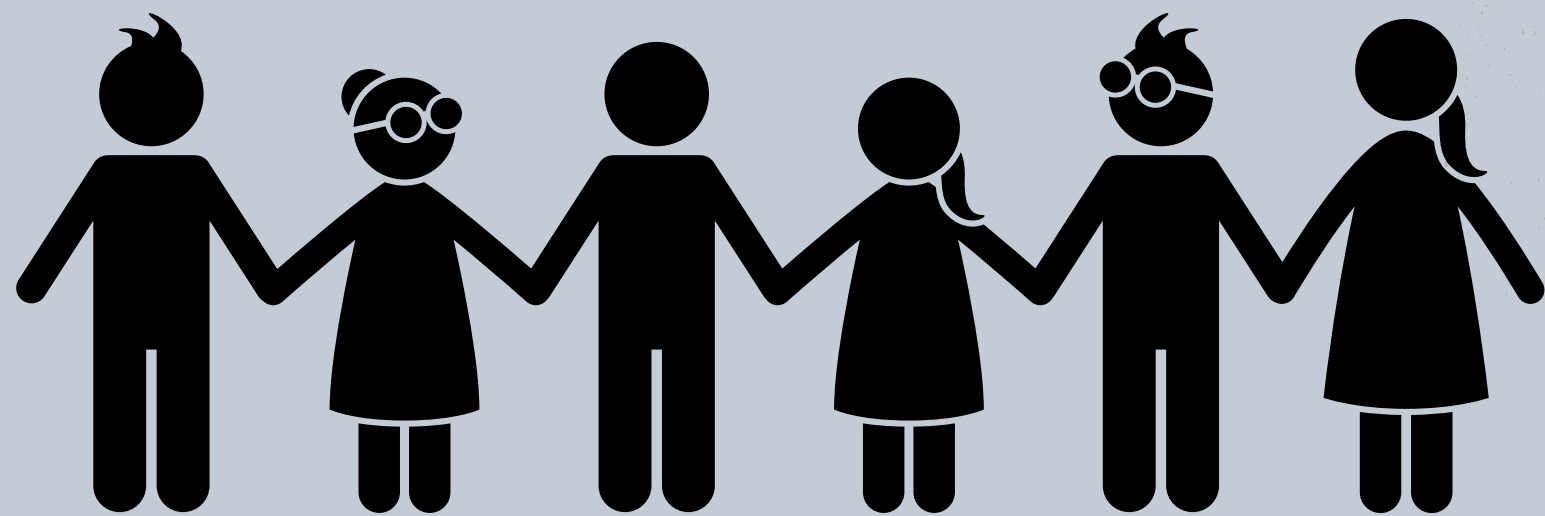
Lack of support and protection

Strengthening social protection policies

Loss to follow up

Psychosocial support and mentorship programs

Advocacy for better legal recognition and protection



THANK YOU!

Question?